

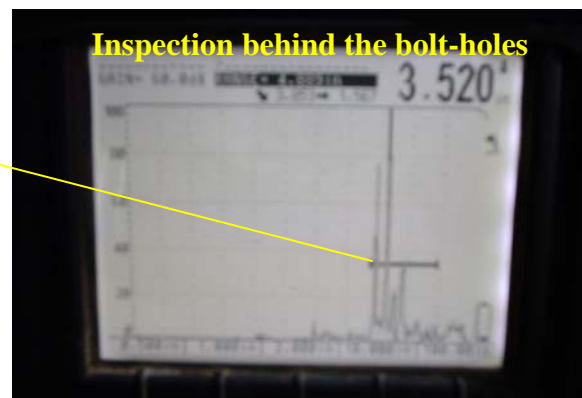
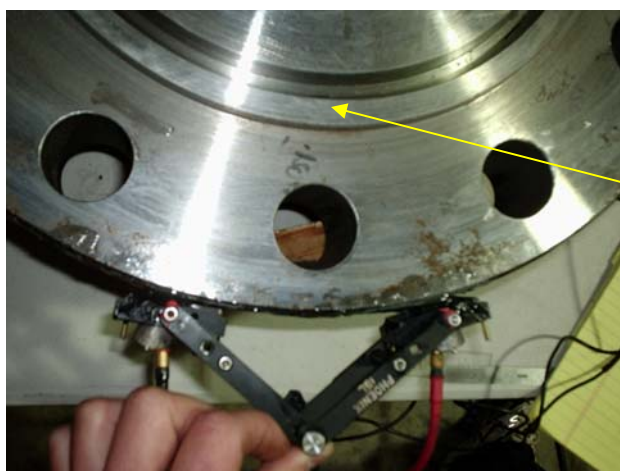
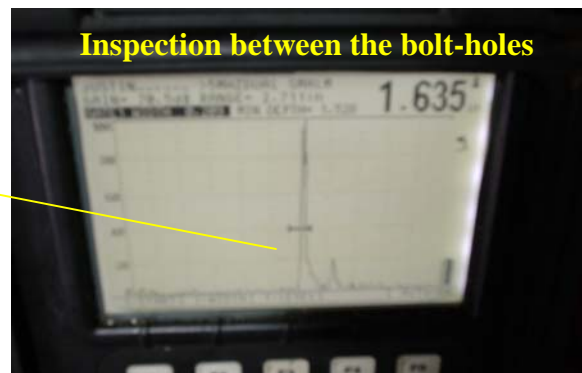
Ring Joint Flange Inspection

Problem: Inspection for cracking in the ring joint area of the flange.

Technique: The application of an ultrasonic method applying a pitch-catch technique assisted by a simple manipulator.

Calibration: Longitudinal ultrasonic transducers are used with calculated probe roof angles. The roof angles are optimized for the range of the sound depending on the diameter of the flange being inspected. Special consideration has been made to adjust the angle such that cracks behind the bolt-holes are readily detected.

Two, 1/2 “, 5 MHz, composite probes are mounted special low angle shoes to look at the specified



1423 East First Street
Suite A
Humble, TX 77338

Phone: 281 540 0314
Fax: 281 540 0317

E-mail: mail@mechanicalintegrityinc.com